



03  
UNDERSTANDING THE CREATION  
AND OUR CREATOR (GENESIS 1 & 2)

© DR. JOHN H. WHITMORE  
SENIOR PROFESSOR OF GEOLOGY  
CEDARVILLE UNIVERSITY

EBC, September 25, 2022

# OUTLINE

- I. COMPARISON OF THE TWO IDEAS
- II. THE NATURALISTIC VIEW OF EARTH HISTORY
- III. THE BIBLICAL VIEW OF EARTH HISTORY

# I. COMPARISON

Ga = Giga annum (billion years)  
Ma = Mega annum (million years)

## BIBLICAL (YOUNG EARTH)

- ASSUMES BIBLE IS HISTORICALLY ACCURATE
- DATES BASED ON GENEALOGIES
- 6-10,000 YEARS OLD
- LITERAL 24-HOUR DAYS DURING CREATION WEEK
- WORLDWIDE FLOOD
- ICE AGE
- TOWER OF BABEL

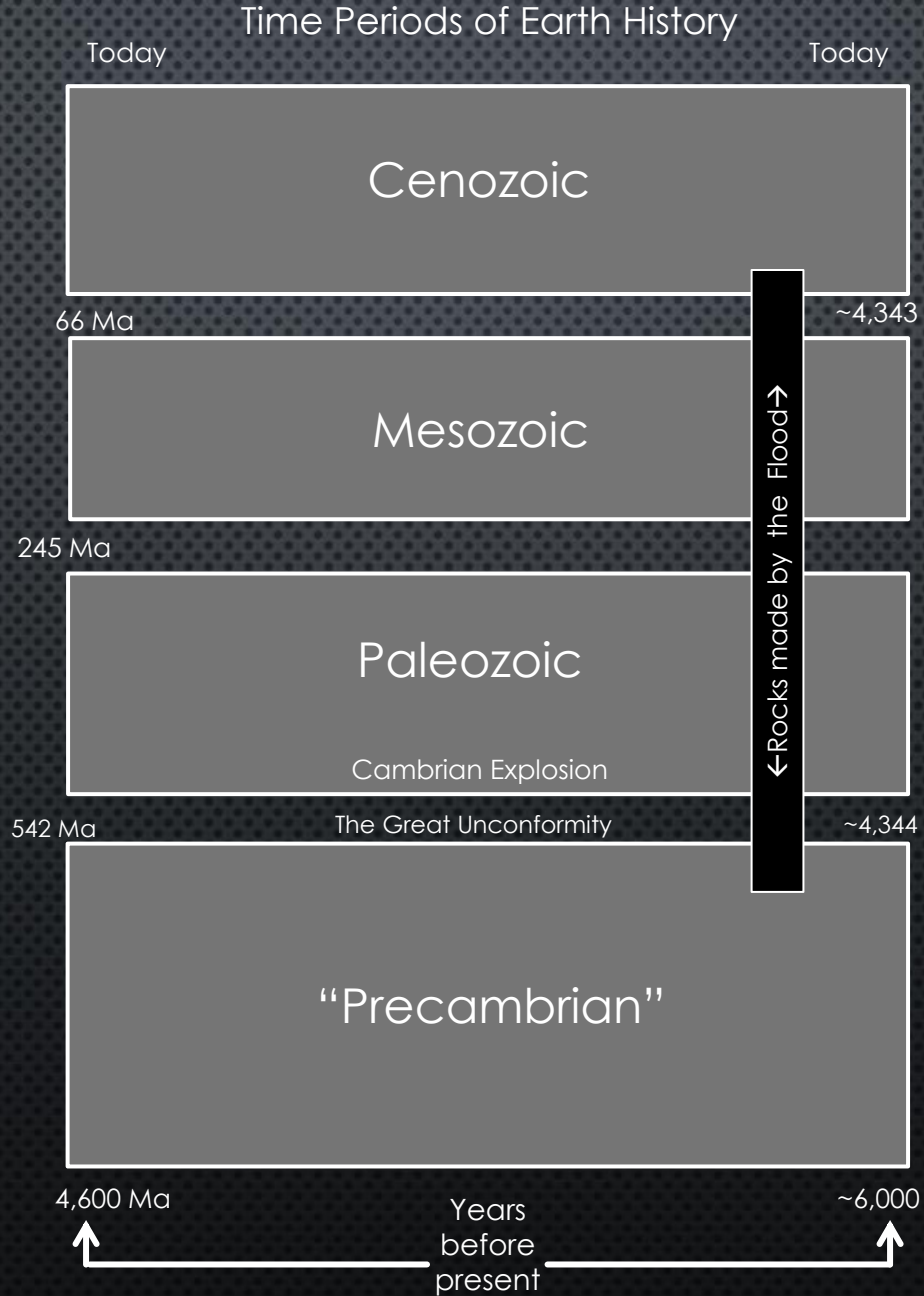
## CONVENTIONAL (NATURALISTIC)

- BIG BANG ABOUT 13 GA AGO
- SOLAR SYSTEM AND EARTH ABOUT 4.6 GA AGO
- SIMPLE LIFE ORIGINATED ON EARTH ABOUT 4.0 GA AGO; COMPLEX EVOLUTION BEGINS IN CAMBRIAN
- CAMBRIAN EXPLOSION ABOUT 530 MA AGO
- PALEOZOIC "OLD LIFE" (542 - 245 MA)
- MESOZOIC "MIDDLE LIFE" (244 - 66 MA)
- CENOZOIC "NEW LIFE" (66 - 0 MA)

# What is the data? What is interpretation of data?

The "Conventional Geology" view of Earth History

The Biblical Geology view of Earth History



## II. THE NATURALISTIC VIEW OF EARTH HISTORY

(EVOLUTIONIST)

# The “Conventional Geology” view of Earth History

The Cenozoic is sometimes called the “Age of Mammals.” Apes begin to evolve into humans about 5 million years ago.

The Mesozoic is sometimes called the “Age of the Dinosaurs,” although mammals and birds lived with them.

Near the beginning of the Paleozoic (in the “Cambrian”) an evolutionary “explosion” of life occurs (530-525 Ma), where nearly every type of animal group evolves, including vertebrates.

The Precambrian time is a period of very little animal life. No animal fossils are represented in these rocks until very late in the time period when some sponges and corals evolve. Fossil bacteria can be found beginning about 3,800 million years ago. The period represents about 88% of earth history.

Today

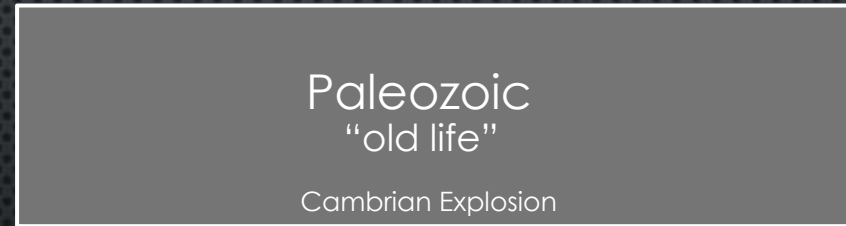
## Time Periods of Earth History



66 Ma



245 Ma



542 Ma

The Great Unconformity



4,600 Ma



Years before present

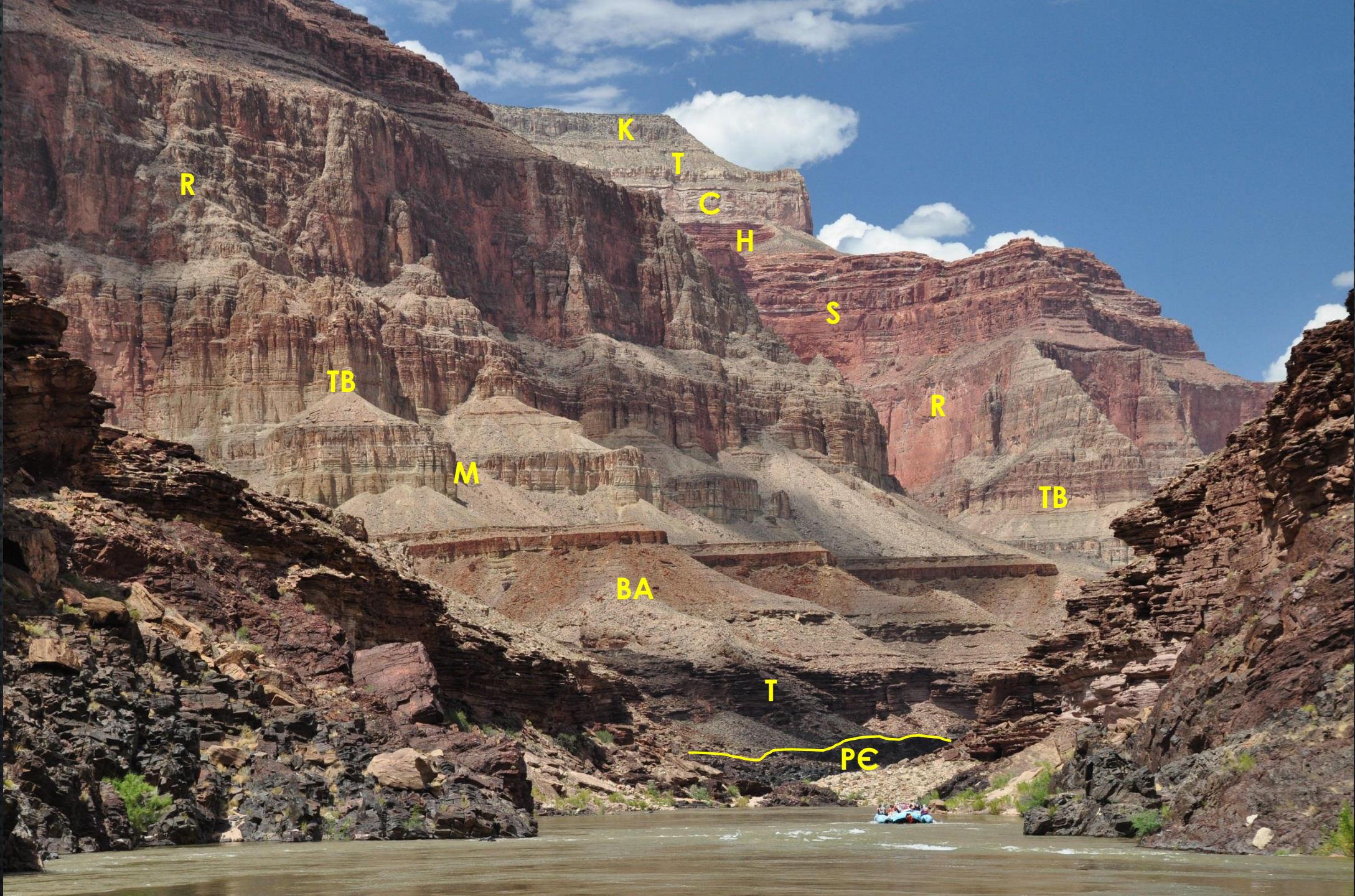


40 body plans  
show up here



Paleozoic Rocks

Precambrian Rocks



R

K

T

C

H

S

TB

R

M

TB

BA

T

PE

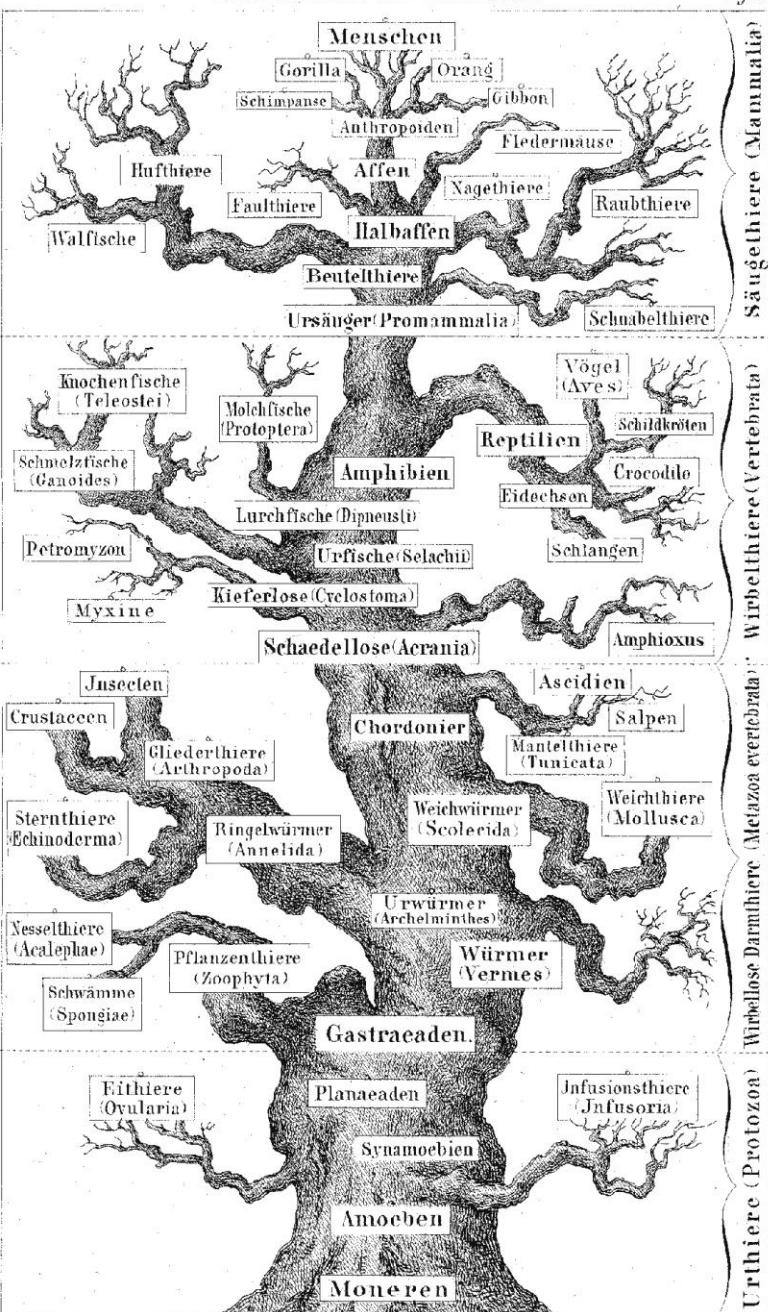


# HOW DOES A NATURALIST LOOK AT THE ROCK RECORD?

- UNIFORMITARIANISM (THE PRESENT IS THE KEY TO THE PAST)
- CHANCE, RANDOM PROCESSES CONTROL EVERYTHING
- SLOW AND GRADUAL PLATE TECTONICS
- EVOLUTION OF LIFE FORMS OVER LONG PERIODS OF TIME, THINGS GET MORE COMPLEX OVER TIME
- ONLY LIMITED CATASTROPHIC EVENTS (METEOR IMPACTS, VOLCANIC ERUPTIONS, ETC.)
- GOD DOES NOT EXIST, OR IF HE DOES IS NOT INVOLVED IN THE PROCESS

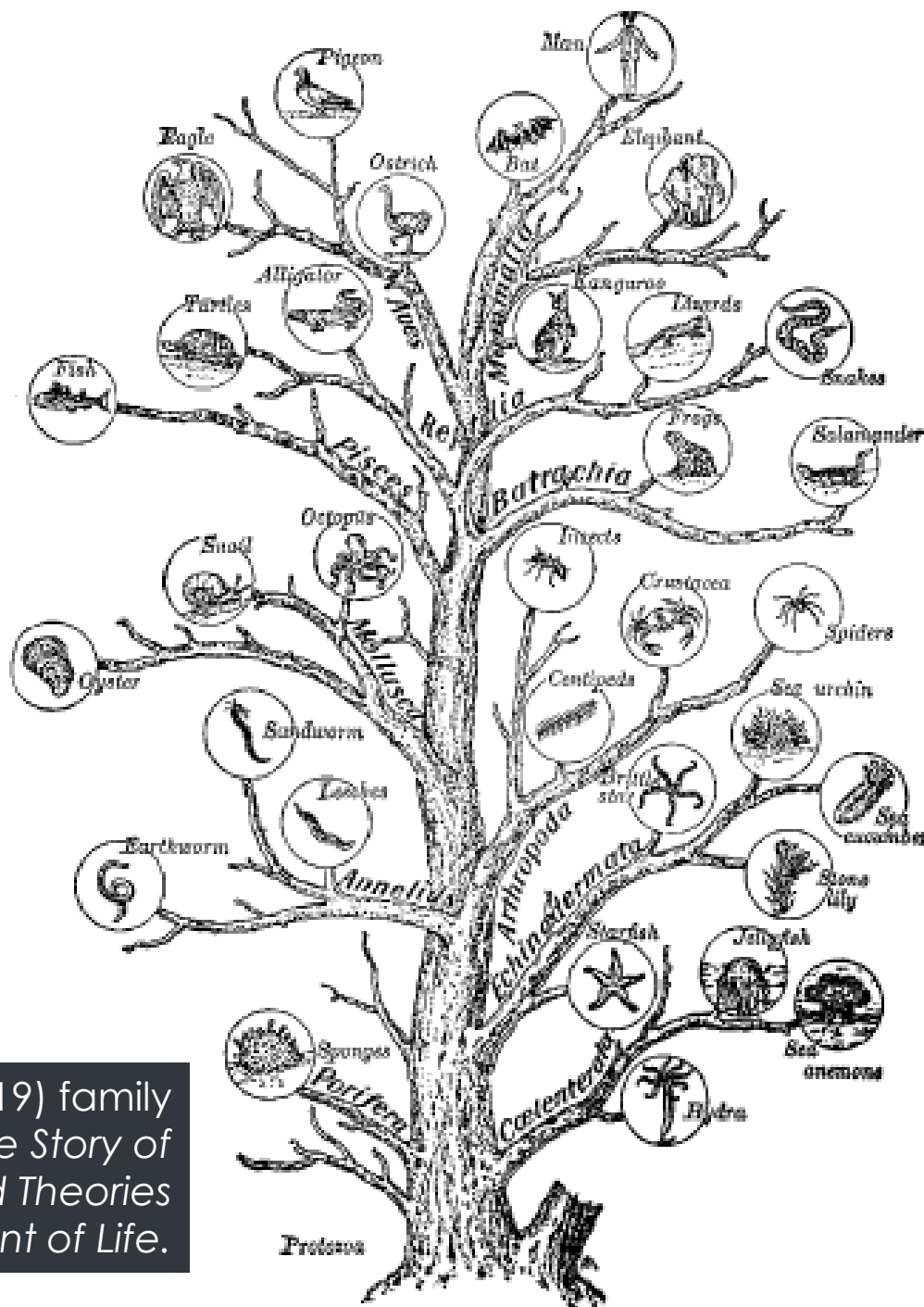
# PREDICTIONS OF NATURALISM

- TRANSITIONAL FORMS (EVOLUTIONARY TREES)
- BENEFICIAL MUTATIONS
- THINGS ARE GETTING BETTER (EVOLUTIONARY IMPROVEMENT)
- EVOLUTION OF NEW BODY PLANS WITH MYRIADS OF NEW SPECIES



# Evolutionary Trees

Ernst Haeckel's "Pedigree of Man" (1874) *The Evolution of Man*.



Gruenberg's (1919) family tree diagram, *The Story of Evolution: Facts and Theories on the Development of Life*.

# III. THE BIBLICAL VIEW OF EARTH HISTORY

(INTERVENTIONIST)

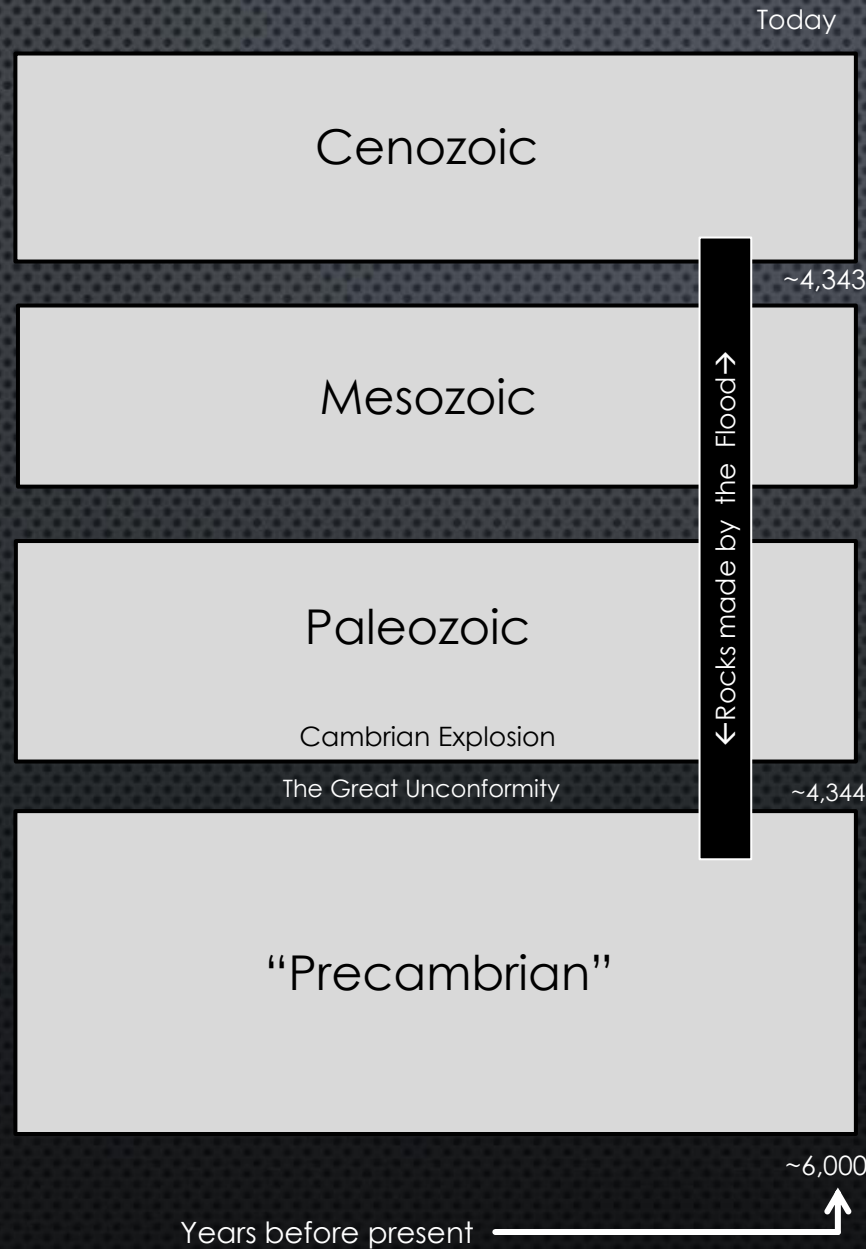
# VARIOUS BIBLICAL IDEAS

- YOUNG-EARTH CREATION
- OLD-EARTH CREATION
- THEISTIC EVOLUTION
- NATURALISTIC EVOLUTION

# YOUNG-EARTH CREATION BELIEFS

- 1) ALL OF GOD'S WORK OF CREATION WAS ACCOMPLISHED IN A SIX ROTATIONAL-DAY PERIOD OF TIME ONLY A FEW THOUSANDS OF YEARS AGO
- 2) GOD DIRECTLY AND MIRACULOUSLY CREATED "KINDS" OF ORGANISMS THAT HAVE SINCE DIVERSIFIED IN A LIMITED FASHION
- 3) HUMANS WERE CREATED SEPARATELY AND MIRACULOUSLY APART FROM OTHER ANIMALS TO BE RULERS OVER CREATION
- 4) A GLOBAL FLOOD DESTROYED THE WORLD AND ITS INHABITANTS AT THE TIME OF NOAH, AND IS RESPONSIBLE FOR MOST SEDIMENTARY ROCKS AND FOSSILS FOUND ON THE PLANET'S SURFACE

# Time Periods of Earth History



# The Creation Geology view of Earth History

The Cenozoic rocks represent post-Flood deposits. They include the record of the dispersion from Babel which are the "cave-man" fossils. This is the longest period of time in the Creation model.

Most Creation geologists believe the Flood is primarily represented by the Mesozoic and Paleozoic rocks. The Flood begins as tremendous erosion occurs on the continents (carving the Great Unconformity) and depositing vast amounts of marine rocks on the continents. Eventually land animals are also overcome to form the Mesozoic deposits.

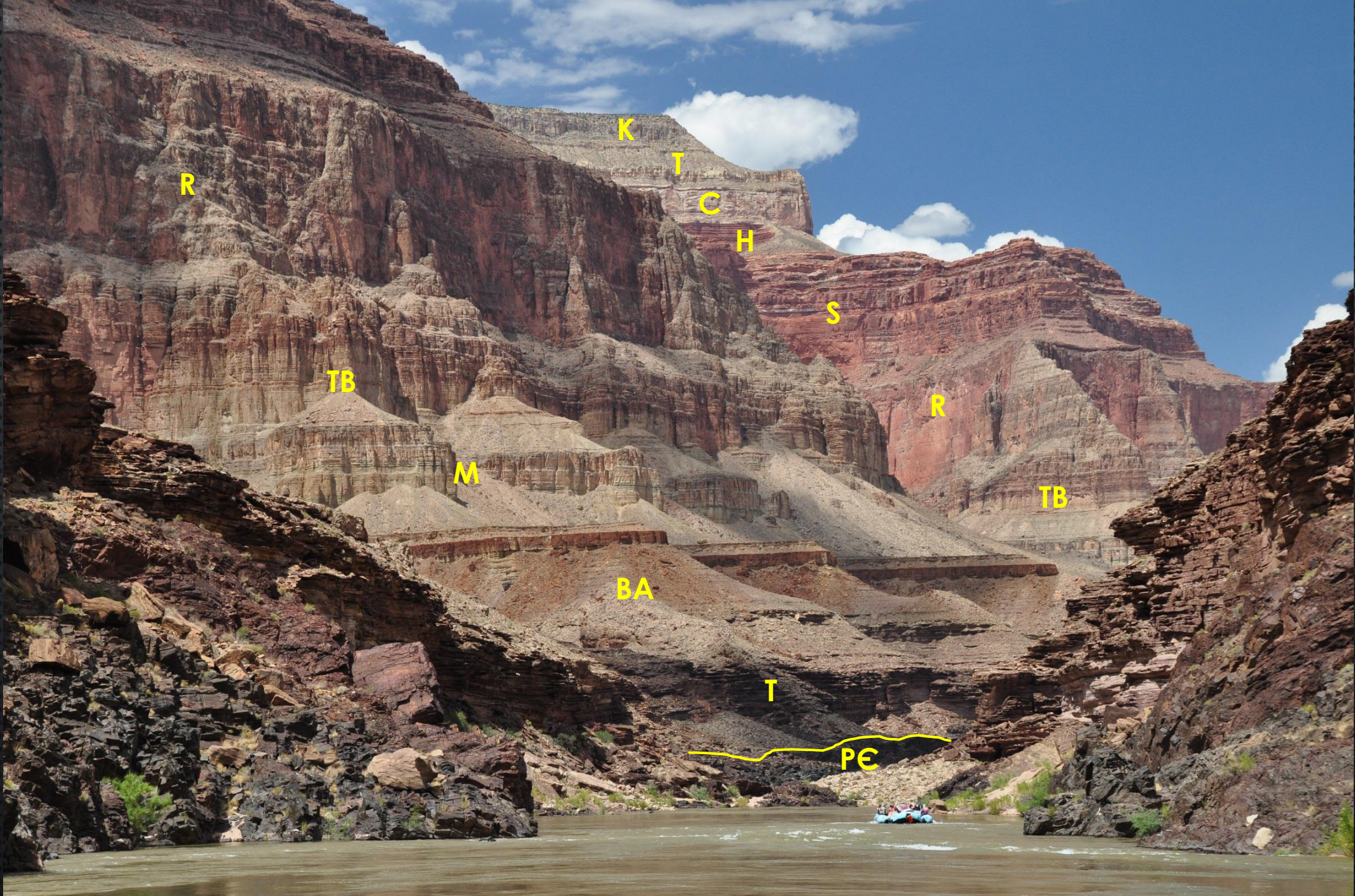
Estimating from biblical chronologies, the date of creation was probably about 6,000 years ago (4004 BC according to Ussher). These rocks are devoid of animal fossils because no catastrophic processes were occurring to bury animal life. In order to be fossilized, organisms must be buried rapidly. In a Creation Geology model these rocks date from the Creation Week and the pre-Flood times.



Flood Rocks

PreFlood Rocks





R

K

T

C

H

S

TB

R

M

TB

BA

T

PE

# HOW DOES A YOUNG EARTH CREATIONIST LOOK AT THE ROCK RECORD?

- CATASTROPHISM
- GOD DESIGNED ALL LIFE FORMS AND CREATED THE EARTH TO SUPPORT THEM
- CATASTROPHIC PLATE TECTONICS DURING THE FLOOD
- EVOLUTION OF LIFE FORMS OVER SHORT PERIODS OF TIME, THINGS LOSE GENETIC INFORMATION OVER TIME [SOMETIMES CALLED “DIVERSIFICATION” TO DISTINGUISH IT FROM “EVOLUTION”]
- SHOULD BE TRANSITIONAL LIFE FORMS, ESPECIALLY IN POST-FLOOD TIMES

# PREDICTIONS OF INTERVENTIONISM

- SEPARATE, DISTINCT KINDS FOLLOWED BY DIVERSIFICATION
- EVIDENCE FOR INTELLIGENT DESIGN
- EXTINCTION OF BODY PLANS, WITH NO NEW BODY PLANS ARISING

# A. THE DAYS OF CREATION (GENESIS 1:1-2:3)

- ONE: SPACE, MATTER, TIME, LIGHT (EARTH COVERED WITH WATER)
- TWO: EXPANSE BETWEEN THE WATERS
- THREE: CONTINENTS, PLANTS
- FOUR: SUN, MOON, STARS
- FIVE: WATER ANIMALS, BIRDS
- SIX: LAND ANIMALS, MAN
- SEVEN: REST

## B. DETAILS OF THE CREATION OF MAN AND THE GARDEN OF EDEN (GENESIS 2:4-25)

1. CREATION OF MAN AND THE GARDEN OF EDEN. GENESIS 2:4-9
2. TREE OF THE KNOWLEDGE OF GOOD AND EVIL. GENESIS 2:9
3. THE RIVER AND ITS FOUR DISTRIBUTARIES. GENESIS 2:10-14
4. EATING. GENESIS 2:15-17
5. EVE. GENESIS 2:18-25

## The “Conventional” view of Earth History

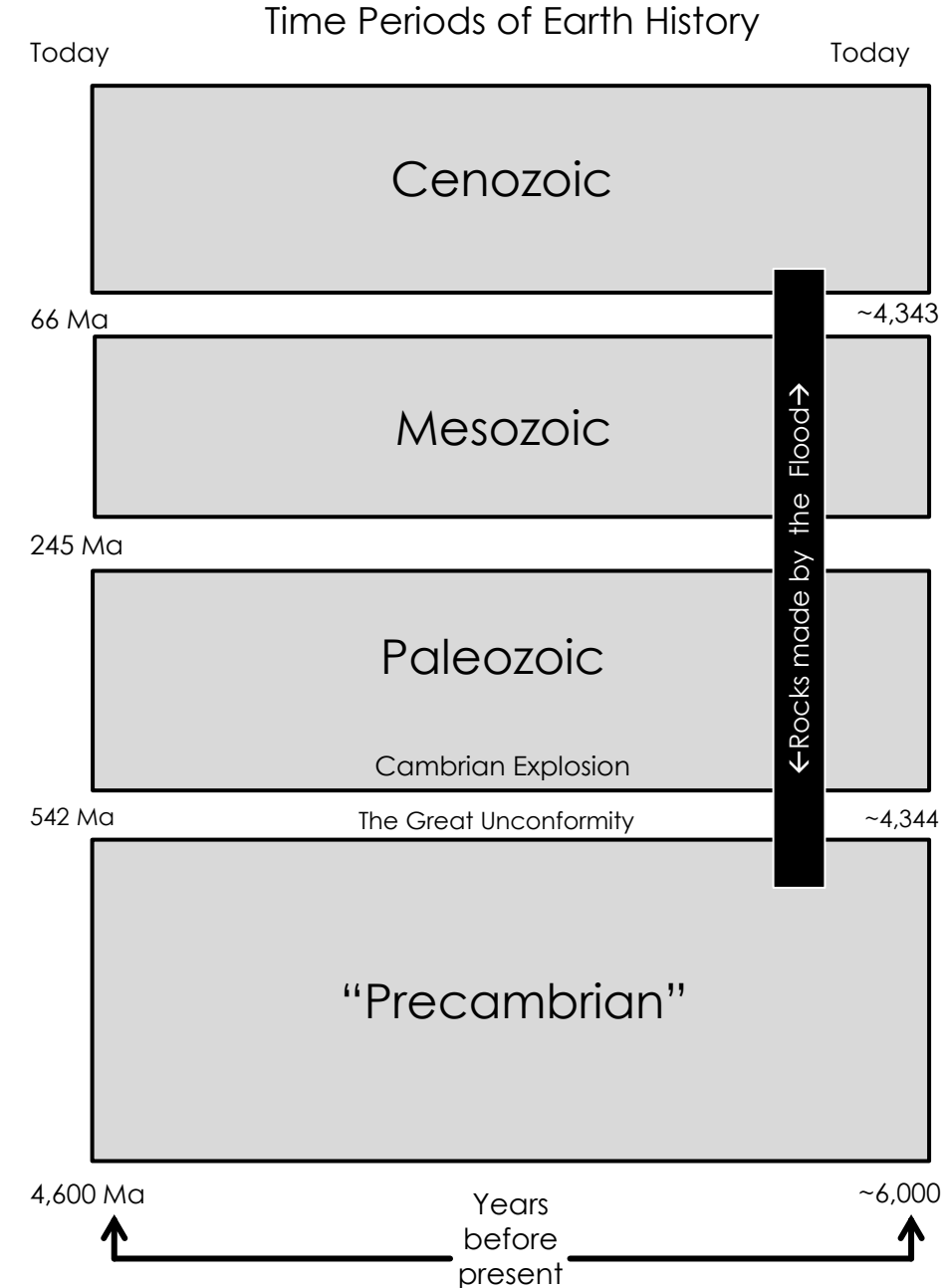
The Cenozoic is sometimes called the “Age of Mammals. Apes begin to evolve into humans about 5 million years ago.

The Mesozoic is sometimes called the “Age of the Dinosaurs,” although mammals and birds lived with them.

Near the beginning of the Paleozoic (in the “Cambrian”) an evolutionary “explosion” of life occurs (530-525 Ma), where nearly every type of animal group evolves, including vertebrates.

The Precambrian time is a period of very little animal life. No animal fossils are represented in these rocks until very late in the time period when some sponges and corals evolve. Fossil bacteria can be found beginning about 3,800 million years ago. The period represents about 88% of earth history.

## TWO VIEWS OF THE ROCK AND FOSSIL DATA



## The Creation Geology view of Earth History

The Cenozoic rocks represent post-Flood deposits. They include the record of the dispersion from Babel which are the “cave-man” fossils. This is the longest period of time in the Creation model.

Most Creation geologists believe the Flood is primarily represented by the Mesozoic and Paleozoic rocks. The Flood begins as tremendous erosion occurs on the continents (carving the Great Unconformity) and depositing vast amounts of marine rocks on the continents. Eventually land animals are also overcome to form the Mesozoic deposits.

Estimating from biblical chronologies, the date of creation was probably about 6,000 years ago (4004 BC according to Ussher). These rocks are devoid of animal fossils because no catastrophic processes were occurring to bury animal life. In order to be fossilized, organisms must be buried rapidly. In a Creation Geology model these rocks date from the Creation Week and the pre-Flood times.